

Suitable to: FIAT CAR, PEUGEOT

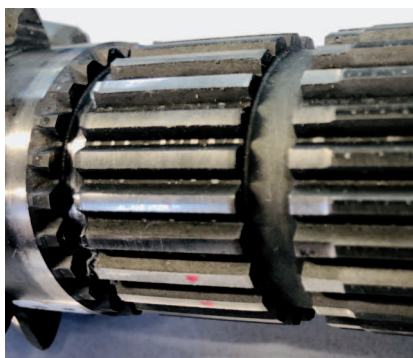
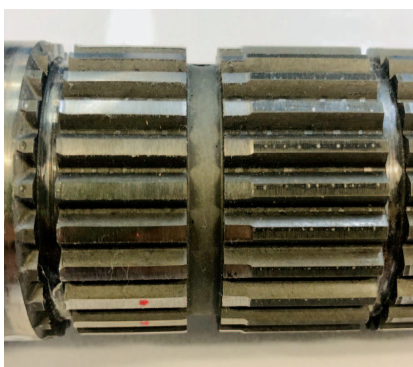
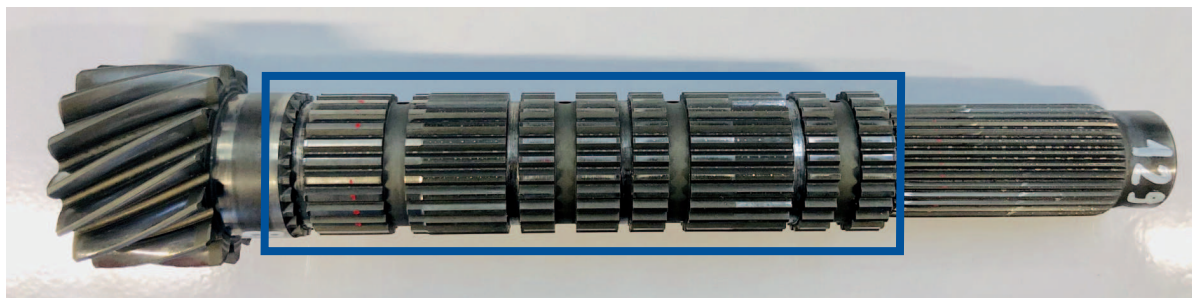
Model: MLGU 5 Speed
MLGU 6 Speed
MLGUC14 6 Speed
ML6C 6 Speed

Application: GEARBOX

We would like to inform you, following some analyses carried out on the market with our customers, that the items listed below may show premature wear of the 25-spline gear, which worsens under certain working conditions.

	AMG Reference	OEM Part No. Fiat Car	OEM Part No. Peugeot	Description
MLGU 5 Speed	12798	9639747188	2316.AW	Helical Pinion 15/25/27 T.
	12799	9639746988	2316.AX	Helical Pinion 13/25/27 T.
MLGU 6 Speed	12802	9671953188	2316.CA	Helical Pinion 15/25/31 T.
	12776	9670840588	2316.AP	Helical Pinion 13/25/31 T.
ML6C 6 Speed	12919	9654513488	2316.Z3	Helical Pinion 14/25/31 T.
	12985	9656193088	2316.Y8	Helical Pinion 15/25/31 T.
MLGUC14 6 Speed	12802	9671953188	2316.CA	Helical Pinion 15/25/31 T.
	12921	9805836280	9805836280	Helical Pinion 14/25/31 T.
	12776	9670840588	2316.AP	Helical Pinion 13/25/31 T.

The picture shows the original OEM pinion with the worn 25 T.

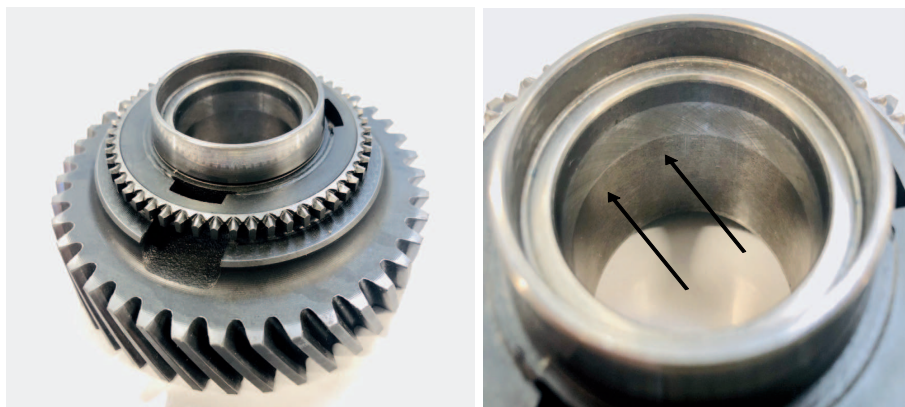


The picture shows the pinion with all matching original parts on the grooved teeth 25.
The teeth wear due to direct coupling with the surface of the gear hole.

Suitable to: FIAT CAR, PEUGEOT

Model: MLGU 5 Speed
MLGU 6 Speed
MLGUC14 6 Speed
ML6C 6 Speed

Application: GEARBOX

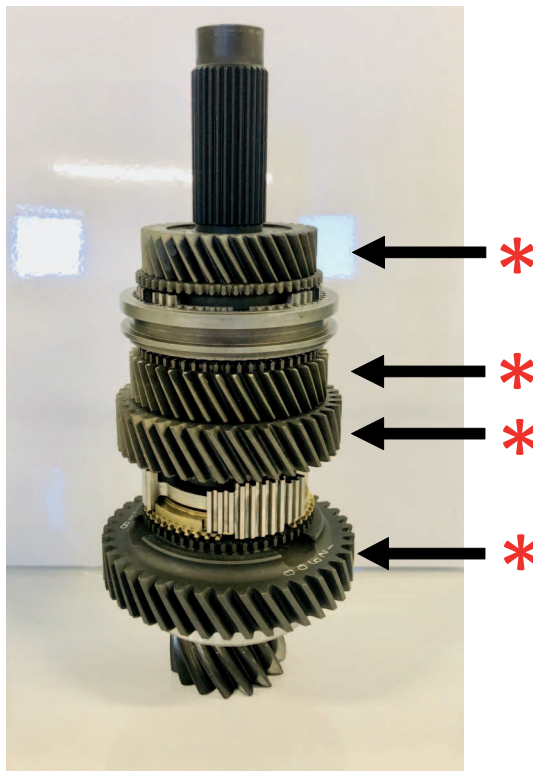
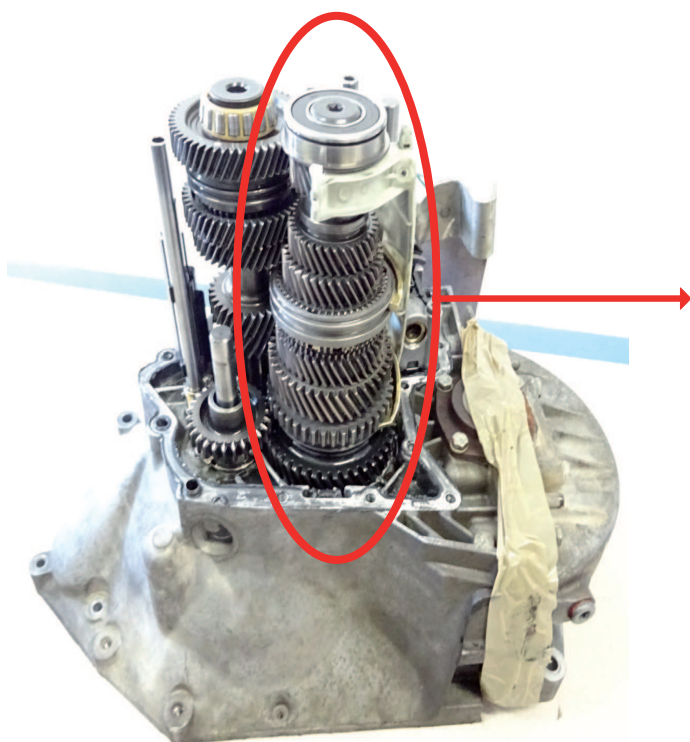


The corresponding gear is shown in the picture.

Original OEM coupling (OEM code 9661271188 / 2334.62 - AMG code 12900). You can see, how the hole surface has worn abnormally.

Causes: Based on sample analyses and feedback received from various customers, it was deduced that the causes of premature deterioration are due to , insufficient or inadequate lubrication, as well as the use of second-hand coupling parts that already show a wear principle by developing excessive backlash in the coupling in a short time.

AMGears Tip: When replacing the pinion or input shaft, it is advisable to also replace all the gears highlighted in the photo (*) as the coupling of parts, even partially worn parts, creates excessive backlash between the surfaces and consequently reduced service life. In addition, check that the oil is sufficient, not exhausted, and that lubrication takes place smoothly.



Our parts are not original but interchangeable with the O.E.M. Ones.
All original equipment manufacturers' names, numbers, symbols and descriptions are used for reference purpose only.
All rights reserved by the manufacturer and the owner of the work. A.M. Gears S.r.l © Copyright 2019